

KRONES BOTTLING PLANTS AT HASSIA MINERALQUELLEN IN BAD VILBEL

MARKET: MACHINE AND PLANT ENGINEERING

1 / 3

THE TASK

In KRONES plants, sensor signals are transmitted at circularly moving conveyor elements using AS-Interface with sliding contacts. The number of contacts is strongly limited and other bus systems are not sufficiently robust for this application. A good on-site diagnosis system in the case of a failure and the easy replaceability of modules and devices are required. Moreover, a connection method with the lowest possible installation effort is desired.



Fig. 1: Bottle conveyor system

THE IMPLEMENTATION

At the bottling plant at Hassia in Bad Vilbel, the AS-Interface system is used in several halls to control plant processes such as sorting empties, cleaning, filling and labeling. For this purpose, switch cabinet and field modules with screwed connections are used. The higher-level control is connected using the AS-Interface PROFIBUS Gateway.

KRONES BOTTLING PLANTS AT HASSIA MINERALQUELLEN IN BAD VILBEL

MARKET: MACHINE AND PLANT ENGINEERING

2 / 3



Fig. 2: Checking the labels

CUSTOMERS' BENEFIT

The complete plant including the bus concept is planned and supplied by KRONES in cooperation with Pepperl+Fuchs according to customer specification. Due to the flexible AS-Interface concept, expansions and modifications of the plant by the customer can be easily realized at any time.

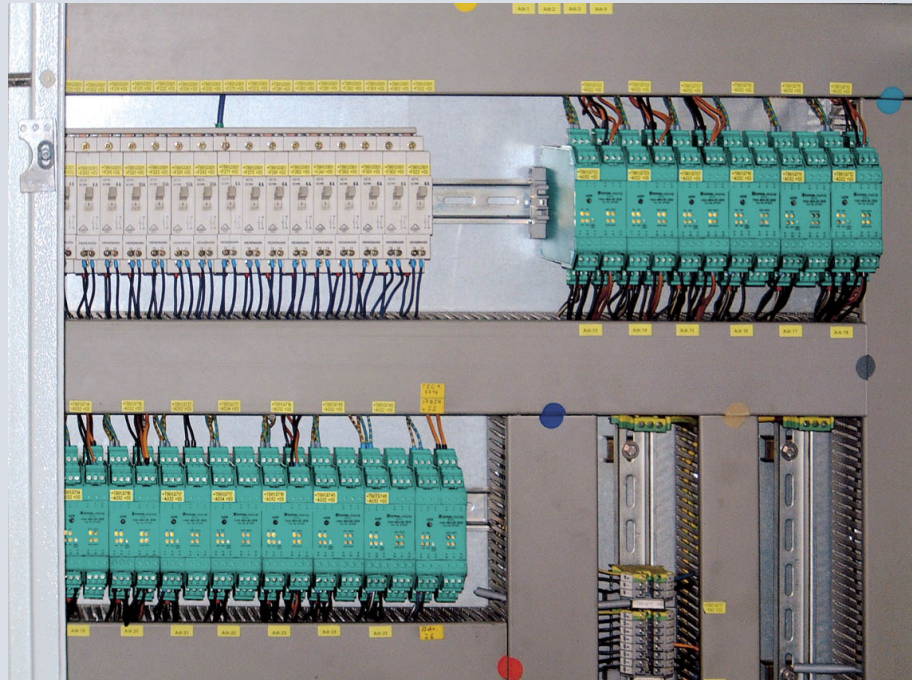


Fig. 3: AS-Interface switch cabinet modules